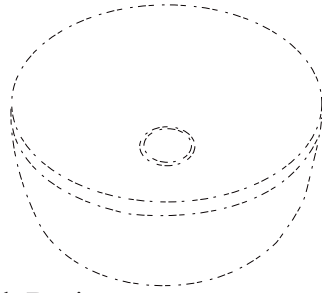


# Installation Guide

## Art Vanity Wash Basin WB-3

### SPARE PARTS



Art Vanity Wash Basin

### TOOLS(Not Available)



Glue Gun



Dicing Saw



Tape Measure



Drill



Faucet

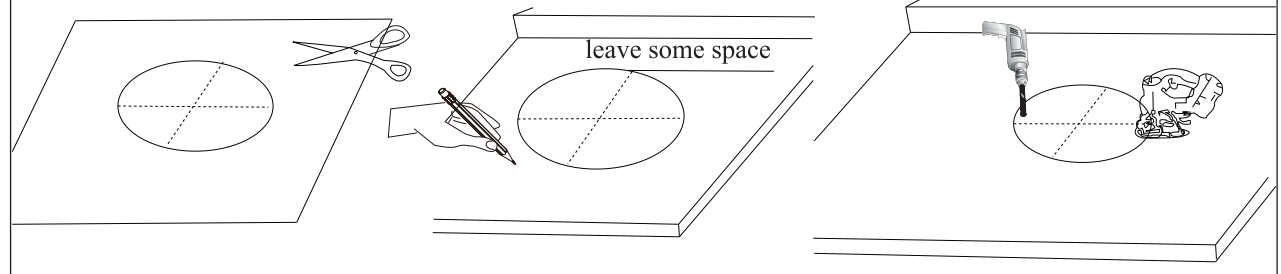


Adjustable Wrench

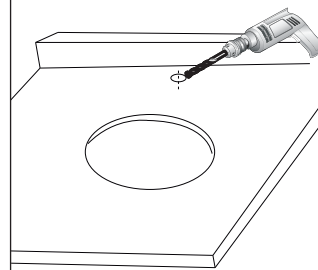


Pencil

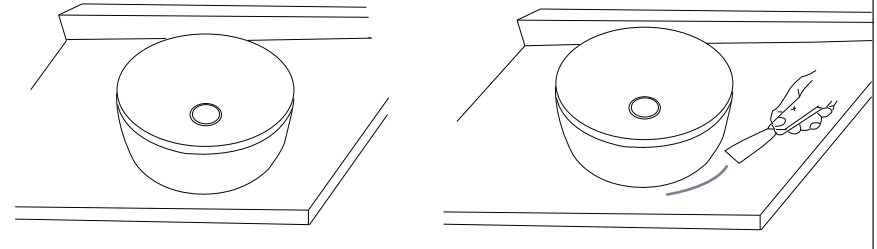
### 1 LINE UP THE POSITION OF THE BASIN



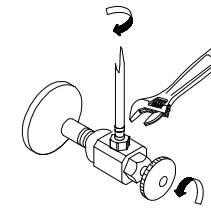
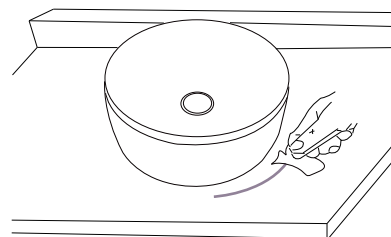
### 2 DRILL THE HOLE



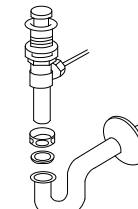
### 3 FIX THE BASIN ON THE MABLE TOP



### 4 CLEAN THE MABLE

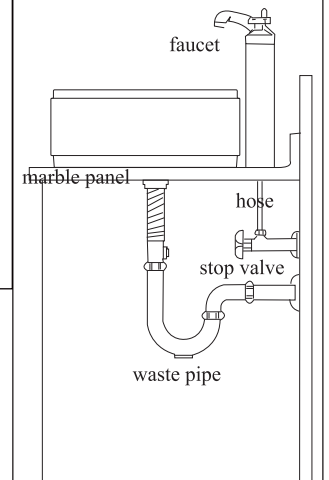


connect the hose to the angle valve



connect waste pipe

### 5 FINISH



### NOTICE

1. Make sure the water supply valve is shut off before installation
2. Make sure that you have access to all plumbing and drain fittings, door clearance and any other obstructions

### MAINTENANCE

Use soft moist cloth for cleaning of the art vanity wash basin. Do not use abrasives and hard cloth. Regular cleaning with the soap solution is recommended do not use strong bleaching agents. In case acid liquids penetrate on the surface remove them immediately with soft cloth.